

EFI Fiery XF Job Monitor

EFI Fiery XF Client

ColorBurst Vutek 7.60T

ColorBurst SpectralVis...

ColorBurst Expressw...

Adobe Reader 7.0

basICColor display 4.0.2

TEST\_A4\_s...

Мои документы

Мой компьютер

Сетевое окружение

Internet Explorer

Windows Update

Активация Windows

Выбор программ по умолчанию

Каталог Windows

Программы

Документы

Настройка

Найти

Справка и поддержка

Выполнить...

Завершение работы...

OUTPUT

Файл

Правка

Вид

Избранное

Сервис

Справка

Назад

Поиск

Папки

Адрес: C:\OUTPUT

	Размер	Тип	Изменен
ASUS		Папка с файлами	19.04.2007 11:46
Автозагрузка			
Игры			
Стандартные			
Internet Explorer			
Outlook Express			
Windows Messenger			
Windows Movie Maker			
Проигрыватель Windows Media			
Удаленный помощник			
EFI			
GretagMacbeth			
ColorBurst_vutek			
UltraVuer4			
WinRAR			
Adobe Reader 7.0			
basICColor display 4.0			
Adobe			
NEC DISPLAY SOLUTIONS			
Total Commander			
AkelPad			

ProfileMaker Pro 5.0.8

ColorPicker

MeasureTool

ProfileMaker Pro Help

Размещение: C:\Program Files\GretagMacbeth\ProfileMaker

Professional 5.0.8

пуск

Adobe Photoshop

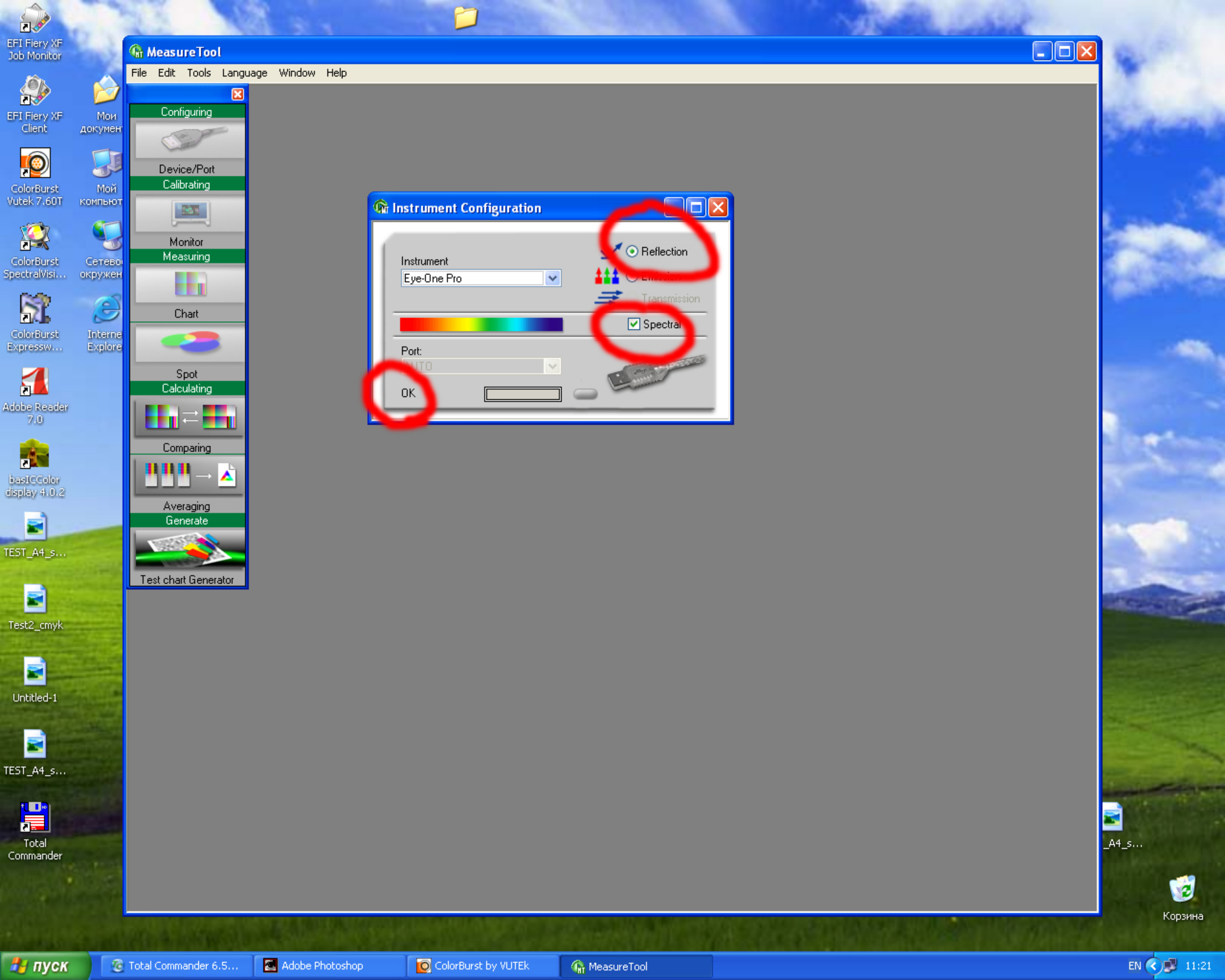
ColorBurst by VUTEK

OUTPUT

EN

12:40





MeasureTool

File Edit Tools Language Window Help

Configuring

Device/Port

Calibrating

Monitor

Measuring

Chart

Spot

Calculating

Comparing

Averaging

Generate

Test chart Generator

Instrument Configuration

Instrument

Eye-One Pro

Reflection

Emission

Transmission

Spectral

Port:


AUTO

OK

EN 11:21

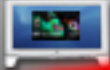
✕

Configuring




Device/Port

Calibrating




Monitor

Measuring

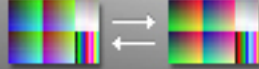


Chart




Spot

Calculating

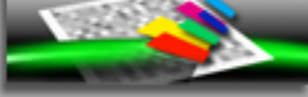


Comparing



Averaging

Generate



Test chart Generator

Configuring

Device/Port

Calibrating

Monitor

Measuring

Chart

Spot

Calculating

Comparing

Averaging

Generate

Test chart Generator

Test Chart Measurement

Choose the type of test chart to measure:

Test Chart:

IT8.7-3 CMYK i1.txt

IT8.7-3 CMYK i1.txt

TC2.83 RGB i1.txt

TC3.5 CMYK i1(A3).txt

TC3.5 CMYK i1(A4).txt

TC9.18 RGB i1(A3).txt

TC9.18 RGB i1(A4).txt

TC9.18 RGB i1.txt

1x\_Mw2\_FOGRA11L\_BB.txt

1x\_Mw2\_FOGRA12L\_BB.txt

1x\_Mw2\_FOGRA13L\_BB.txt

1x\_Mw2\_FOGRA14L\_BB.txt

1x\_Mw2\_FOGRA15L\_SB.txt

1x\_Mw2\_FOGRA16L\_SB.txt

1x\_Mw2\_FOGRA17L\_SB.txt

1x\_Mw2\_FOGRA18L\_SB.txt

1x\_Mw2\_FOGRA19L\_BB.txt

1x\_Mw2\_FOGRA20L\_BB.txt

1x\_Mw2\_FOGRA21L\_BB.txt

1x\_Mw2\_FOGRA22L\_BB.txt

1x\_Mw2\_FOGRA23L\_SB.txt

1x\_Mw2\_FOGRA24L\_SB.txt

1x\_Mw2\_FOGRA25L\_SB.txt

1x\_Mw2\_FOGRA26L\_SB.txt

1x\_Mw2\_FOGRA27L\_SB.txt

1x\_Mw2\_FOGRA28L\_SB.txt

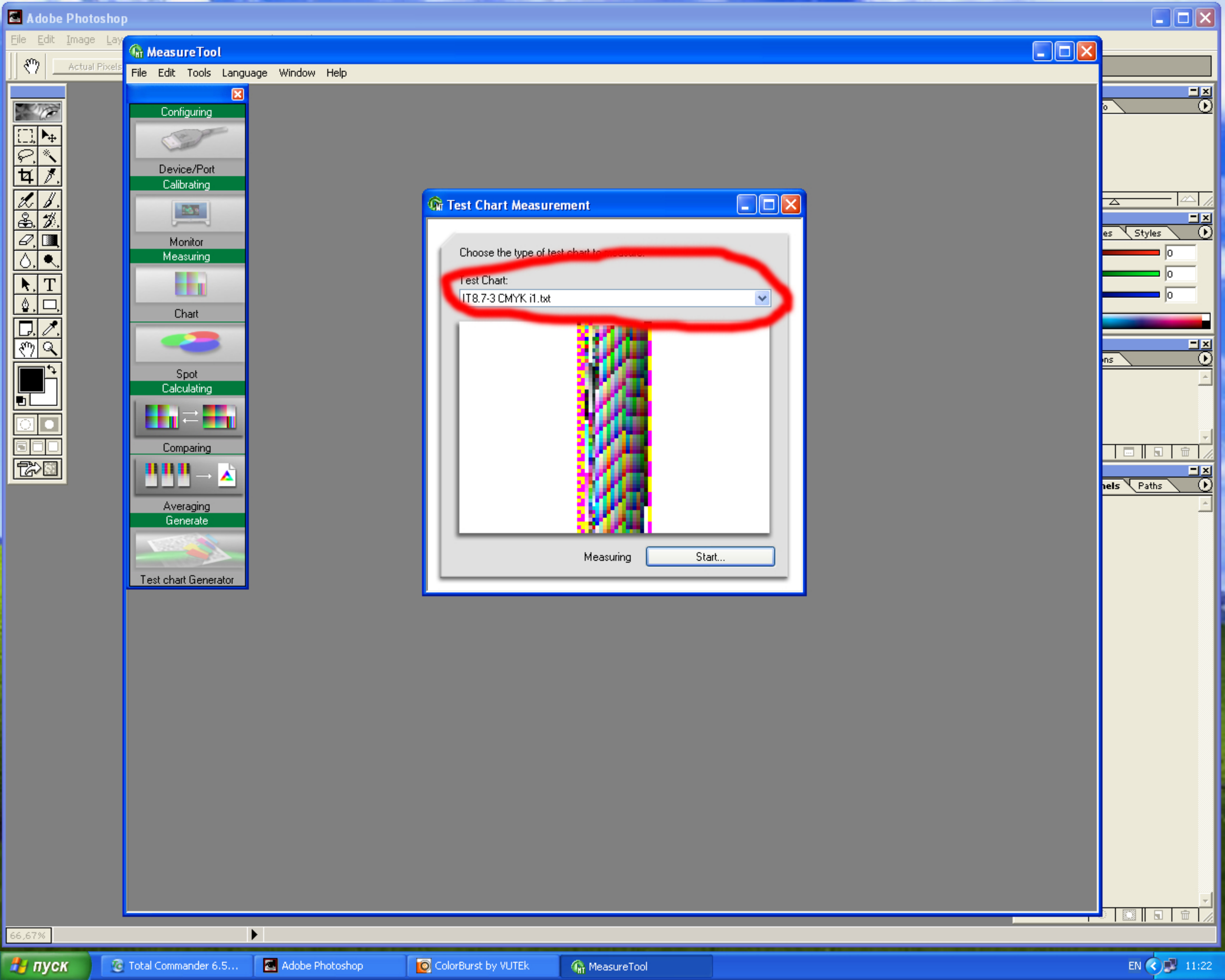
1x\_Mw2\_FOGRA29L\_SB.txt

1x\_Mw2\_FOGRA30L\_SB.txt

1x\_Mw2\_FOGRA31L\_SB.txt

1x\_Mw2\_FOGRA32L\_SB.txt





## MeasureTool

File Edit Tools Language Window Help

### Configuring

Device/Port

### Calibrating

Monitor

### Measuring

Chart

Spot

### Calculating

Comparing

Averaging

### Generate

Test chart Generator

## Test Chart Measurement

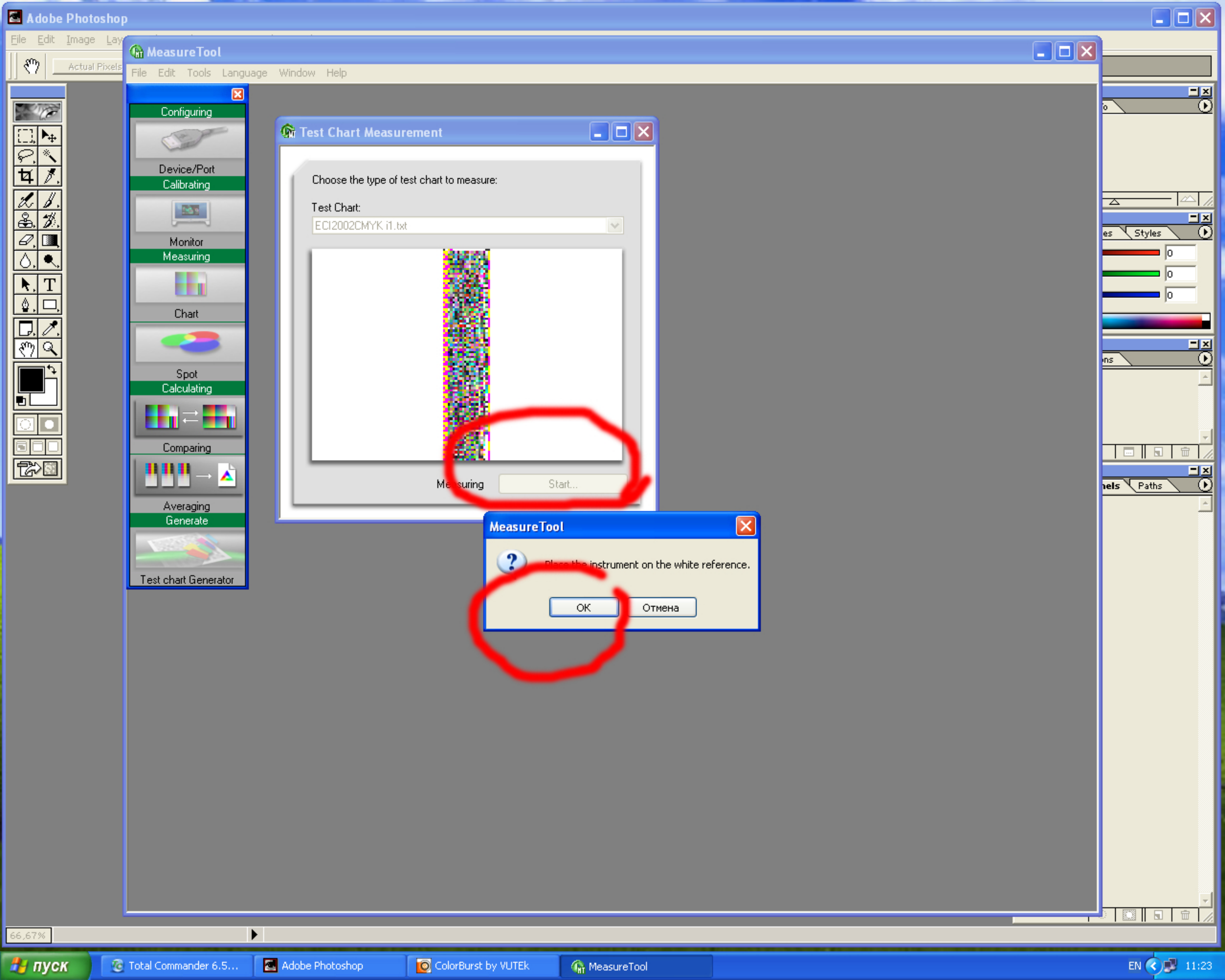
Choose the type of test chart to measure.

Test Chart:

IT8.7-3 CMYK il.txt

Measuring

Start...



MeasureTool

File Edit Tools Language Window Help

Configuring

Device/Port

Calibrating

Monitor

Measuring

Chart

Spot

Calculating

Comparing

Averaging

Generate

Test chart Generator

Test Chart Measurement

Choose the type of test chart to measure:

Test Chart:

ECI2002CMYK i1.txt

Measuring Start...

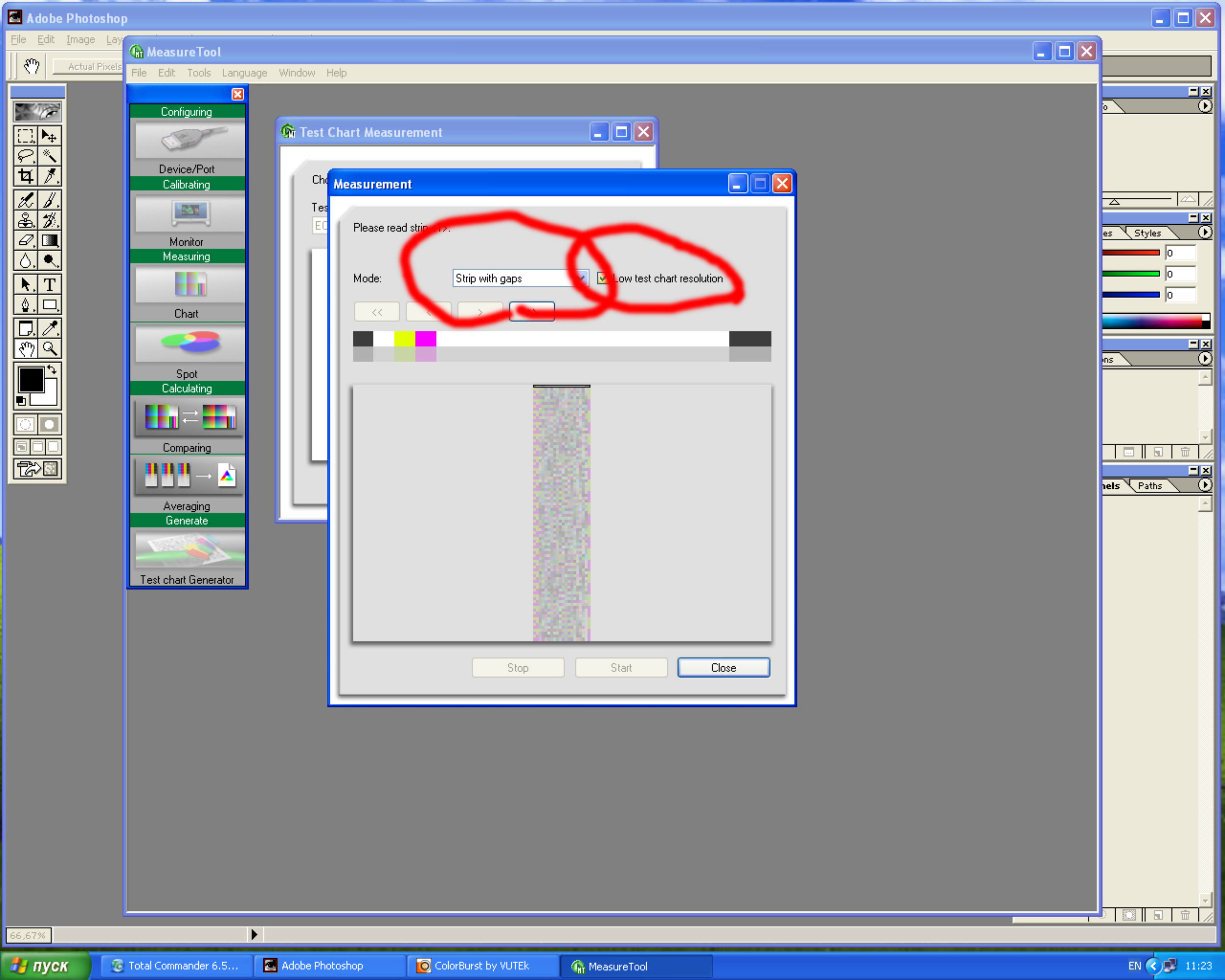
MeasureTool

?

Place the instrument on the white reference.

OK Отмена





Configuring

Device/Port

Calibrating

Monitor

Measuring

Chart

Spot

Calculating

Comparing

Averaging

Generate

Test chart Generator

Test Chart Measurement

Choose the type of test chart to measure:

Test Chart:

ECI2002CMYK.i1.txt

Measurement

Please read strip <1>.

Mode: Strip with gaps

Low test chart resolution

<< < > >>

Stop Start Close



Configuring

Device/Port

Calibrating

Monitor

Measuring

Chart

Spot

Calculating

Comparing

Averaging

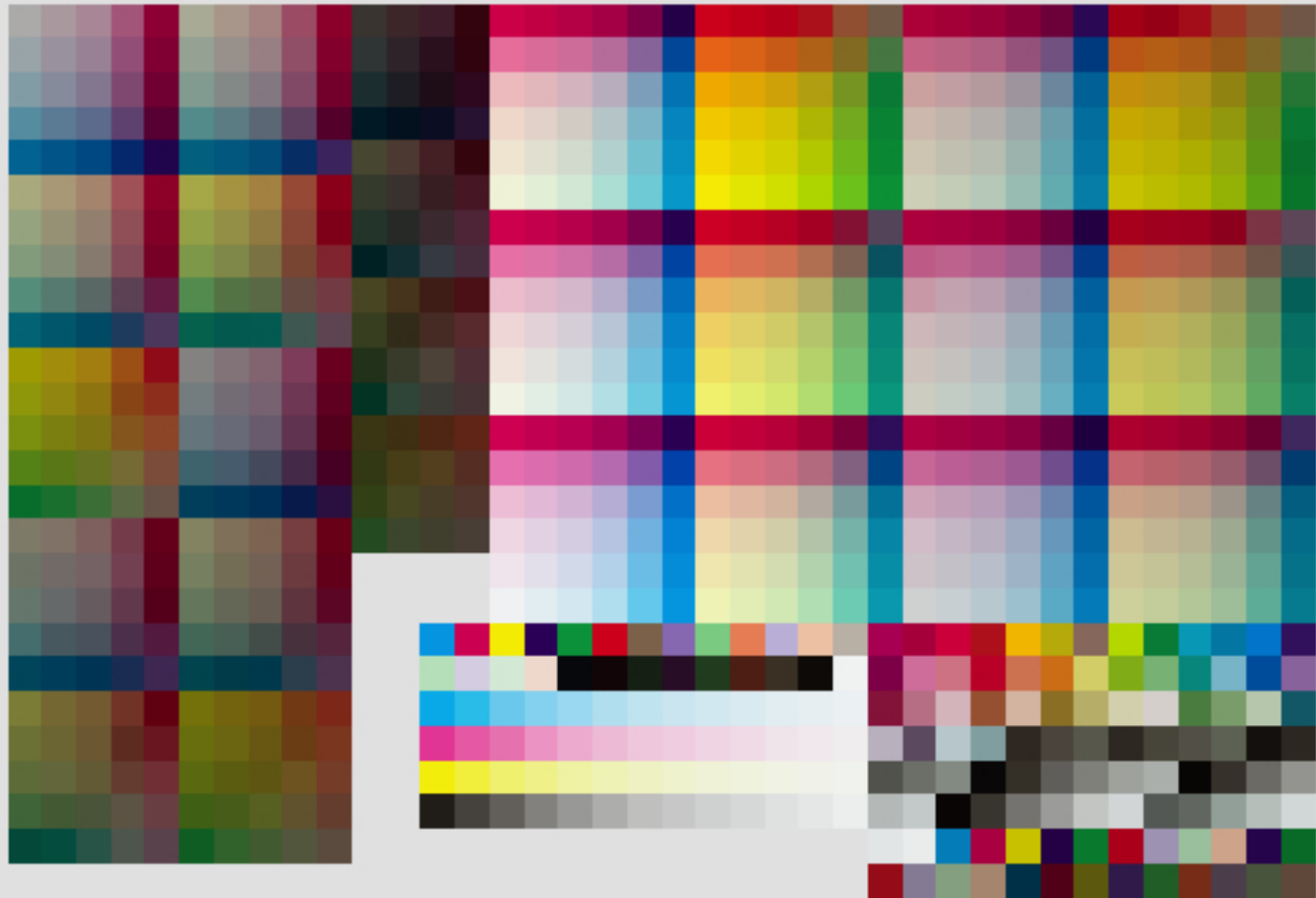
Generate

Test chart Generator

SK Intercoat.txt

Measurement Data | Optical density | Gradation curve | Dot Gain

spkt / 928 Patches



☒ Additional information

Observer angle: 2°

Illumination: D50

Layout: ISO 12642

Export Lab...

- Open... Ctrl+O
- Save As... Ctrl+S
- Close Ctrl+W
- Import ICC Profile...
- Quit Ctrl+Q

Configuring

Device/Port

Calibrating

Monitor

Measuring

Chart

Spot

Calculating

Comparing

Averaging

Generate

Test chart Generator

Test Chart Measurement

Choose the type of test chart to measure:

Test Chart:

ECI2002CMYK

Untitled

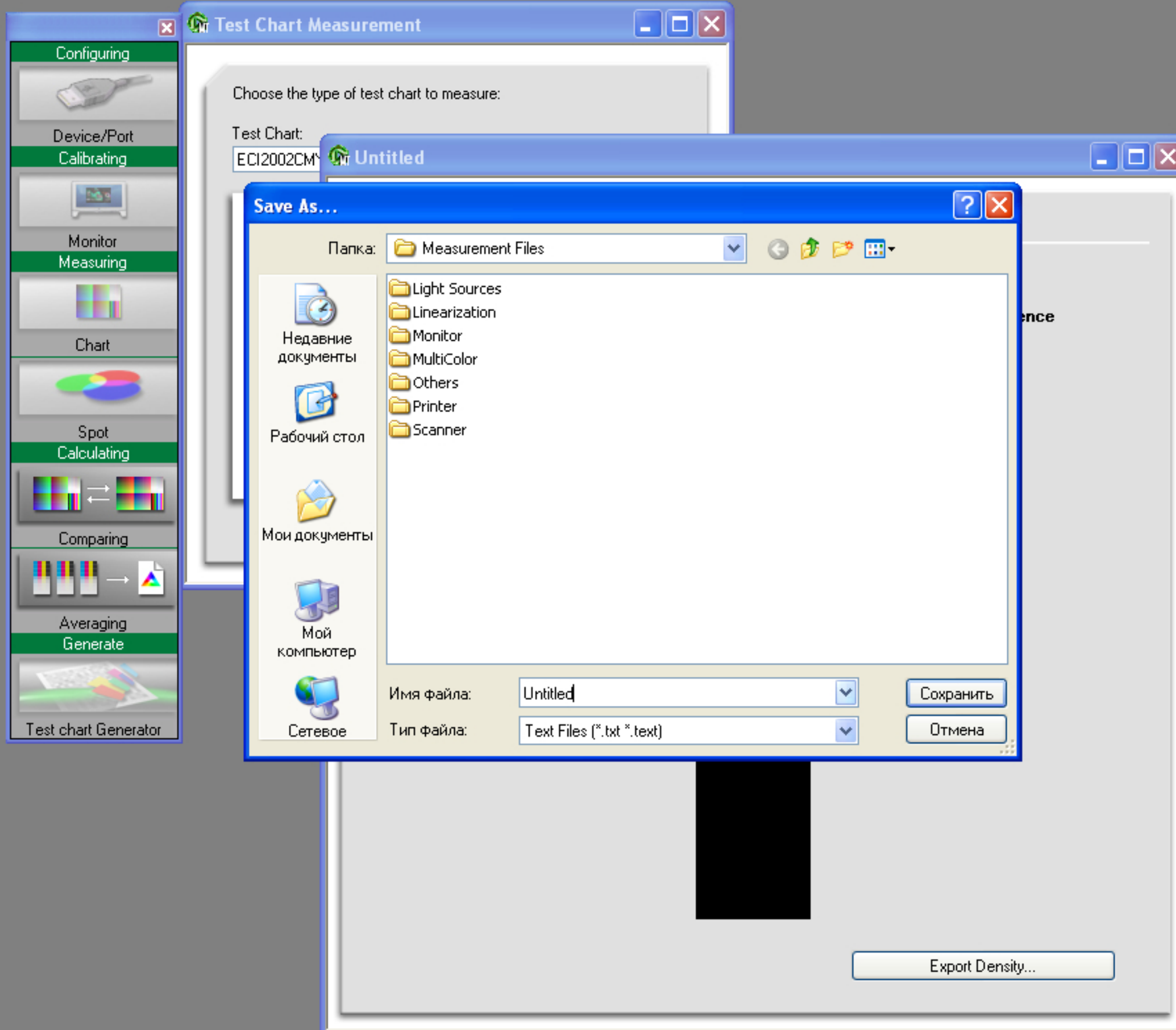
Measurement Data | Optical density | Gradation curve | Dot Gain

spkt / 1780 Patches

☐ Additional information

Export Lab...





Configuring

Device/Port

Calibrating

Monitor Measuring

Chart

Spot

Calculating

Comparing

Averaging

Generate

Test chart Generator

Test Chart Measurement

Choose the type of test chart to use

Test Chart: ECI2002CMYK

Save As...

Папка: M

Недавние документы

Рабочий стол

Мои документы

Мой компьютер

Сетевое

Имя файла

Тип файла

ProfileMaker

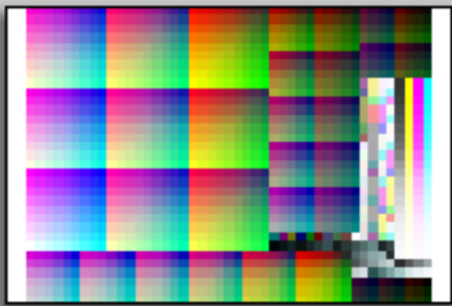
File Edit Language Help

ProfileMaker 5.0 PROFESSIONAL

MONITOR CAMERA SCANNER **PRINTER** MULTICOLOR DEVICE LINK


Reference Data

ECI2002V CMYK.txt



Measurement Data

None



Profile Size

Large

Perceptual Rendering Intent

Neutral Gray

Gamut Mapping

LOGO Colorful

Separation...

GCR3-40-100-400

Viewing Light Source

D50

☐ Correct for Optical Brightener

Calculate Profile

Start...

Batch

Export Density...





Configuring

Device/Port

Calibrating

Monitor Measuring

Chart

Spot

Calculating

Comparing

Averaging

Generate

Test chart Generator

Test Chart Measurement

Choose the type of test chart to use

Test Chart: ECI2002CMYK

Save As...

Папка: M

Недавние документы

Рабочий стол

Мои документы

Мой компьютер

Сетевое

ProfileMaker

File Edit Language Help

ProfileMaker 5.0 PROFESSIONAL

MONITOR CAMERA SCANNER **PRINTER** MULTICOLOR DEVICE LINK

**Reference Data**

ECI2002CMYK.it.txt

**Profile Size**

Large

**Perceptual Rendering Intent**

Neutral Gray

**Gamut Mapping**

LOGO Colorful

Separation...

**GCR3-40-100-400**

**Viewing Light Source**

D50

☐ Correct for Optical Brightener

**Calculate Profile**

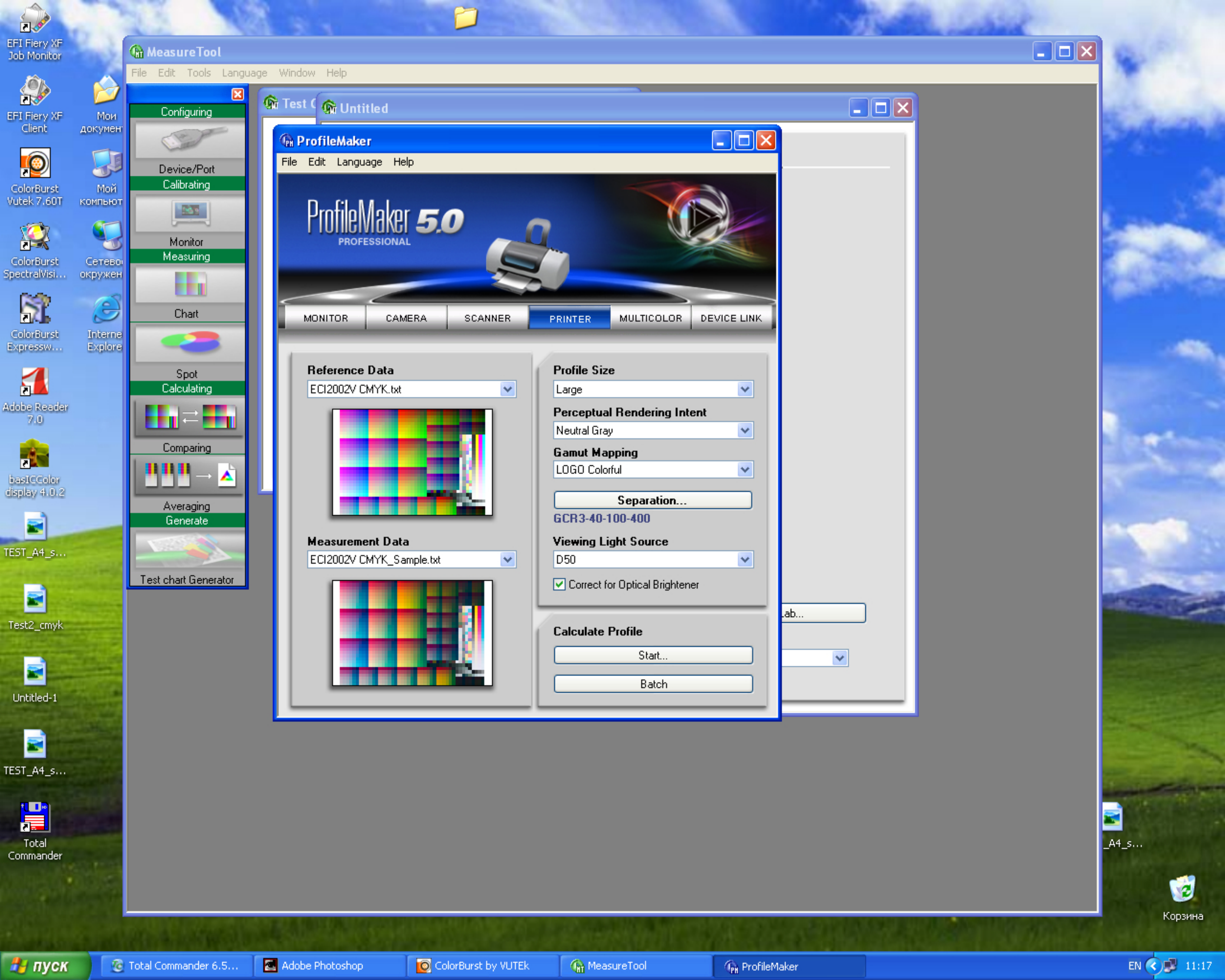
Start...

Batch

Export Density...

- Measurement Data**
- None
- None
- Open...
- Import ICC Profile...
- ColorEye XTH
- Eye-One iD
- Eye-One iSis
- Eye-One Pro
- iCColor
- SpectroEye
- Spectrolino
- SpectroMat
- SpectroScan
- SpectroScan T
- SPM
- Techkon CP300
- Techkon RS800
- Techkon SP810/820
- Viptronic Vipdens 2000
- X-Rite 528/530
- X-Rite 938/939
- X-Rite Digital Swatchbook
- X-Rite DTP41
- X-Rite DTP41 T
- X-Rite DTP51
- X-Rite DTP70
- ECI2002V CMYK\_Sample.txt





MeasureTool

File Edit Tools Language Window Help

Configuring

Device/Port

Calibrating

Monitor

Measuring

Chart

Spot

Calculating

Comparing

Averaging

Generate

Test chart Generator

Test

Untitled

ProfileMaker

File Edit Language Help

ProfileMaker 5.0  
PROFESSIONAL

MONITOR

CAMERA

SCANNER

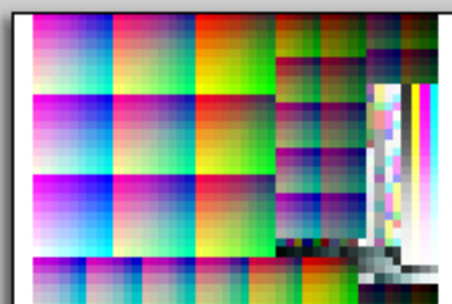
PRINTER

MULTICOLOR

DEVICE LINK

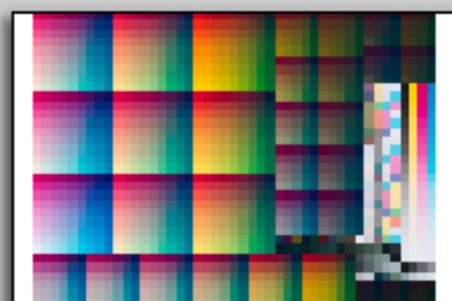
Reference Data

ECI2002V CMYK.txt



Measurement Data

ECI2002V CMYK\_Sample.txt



Profile Size

Large

Perceptual Rendering Intent

Neutral Gray

Gamut Mapping

LOGO Colorful

Separation...

GCR3-40-100-400

Viewing Light Source

D50

☒ Correct for Optical Brightener

Calculate Profile

Start...

Batch

lab...

пуск

Total Commander 6.5...

Adobe Photoshop

ColorBurst by VUTEK

MeasureTool

ProfileMaker

EN 11:17

Корзина



